

ADORE Crema 660 1-V

ADU Plan Basic Information

ADU Model Name: **ADORE Crema 660 1-V**

Link to website: <https://adore-homes.com/houses/adore-crema-660-1/>

Square Footage: 660

No. of Bedrooms: 2

No. of Bathrooms: 1

No. of Story: 1

Overall Dimensions: 44' (L) x 15' (W) x 9' (H)

Construction Type: Prefab

Prefab Type: Manufactured

ADU Image



Features

- * All-Electric
- * Accessibility Features
- * Turnkey Project

Cost Information

Minimum Cost: \$ 273,900

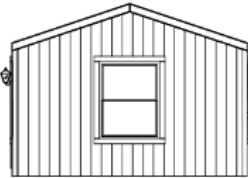
Additional Costs Information: Delivery and installation are already included in the unit's minimum cost. Additional costs will apply for soil testing and trenching, if necessary, and will be communicated to you before moving forward.

Architectural Images

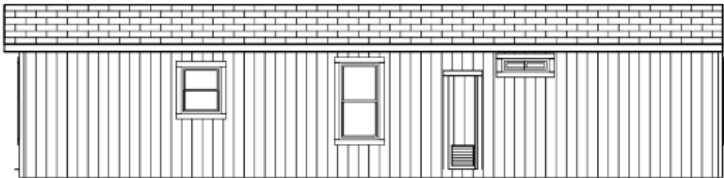
Floor Plan



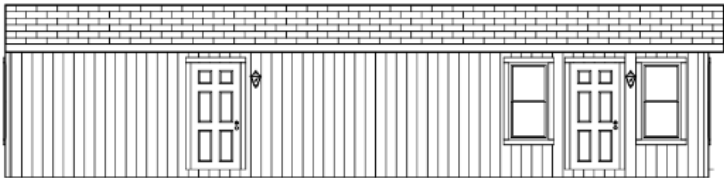
Exterior Elevations



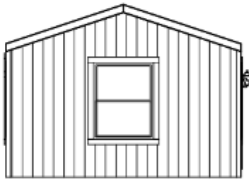
REAR



BACK



FRONT



HITCH