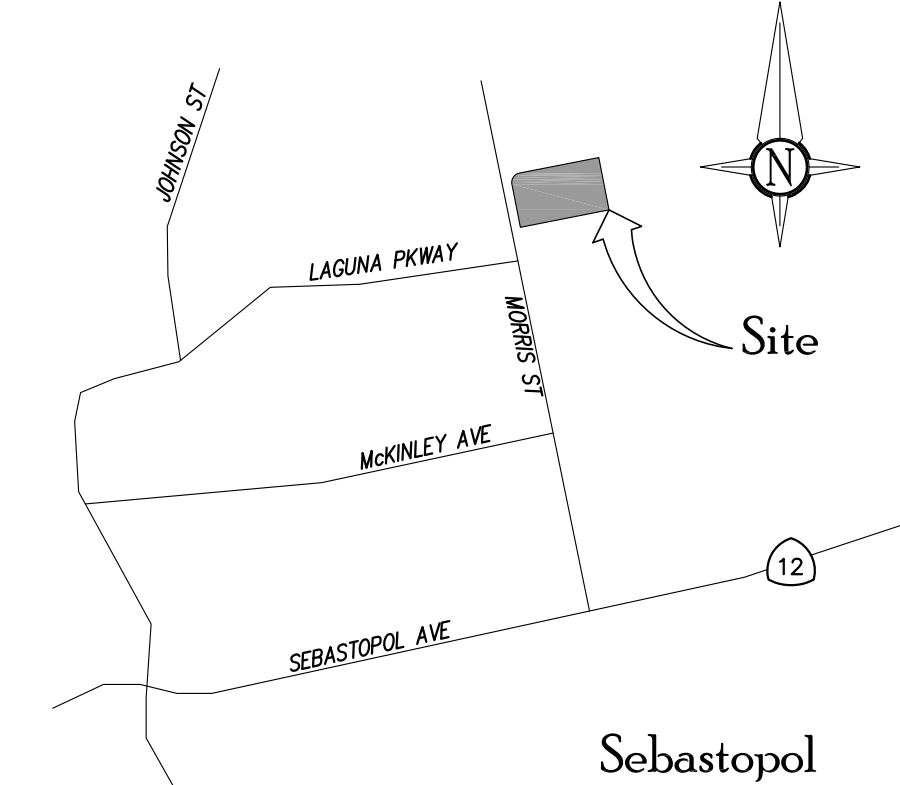


**NOTES**

1. TOPOGRAPHIC INFORMATION SHOWN HERE IS BASED UPON A FIELD SURVEY PERFORMED BY 1031SURVEY, INC. IN AUGUST 2021 USING TERRESTRIAL LIDAR.
2. VERTICAL DATUM: NGS PID JT0838, ELEVATION=69.85, NAVD88 DATUM; A TEMPORARY BENCHMARK (TBM) IS LOCATED ON A MAGNAIL & SHINER ON THE WEST SIDE OF MORRIS STREET OPPOSITE THE NORTHERLY GATE, ELEVATION=X, NAVD88 DATUM.
3. BOUNDARY IS BASED UPON THAT CERTAIN RECORD OF SURVEY FILED IN BOOK 767 OF MAPS, AT PAGE 17, SCR.
4. PROPERTY LIES WITHIN FLOOD ZONE AE, HAVING A BASE FLOOD ELEVATION (BFE) OF 78, AS SHOWN ON THE FEMA FIRM MAP NO. 08097C0715E, EFFECTIVE DATE DECEMBER 2, 2008.
5. GROUND OBSTRUCTIONS: EDGES OF CONCRETE IN MANY AREAS IS OBSCURED BY DIRT; NUMEROUS CONCRETE BLOCKS EXIST ON SITE THAT BLOCK THE GROUND OR ARE STACKED AS A WALL; DROP INLET AND CONCRETE APRON SHOWN ON SITE WERE NOT VISIBLE DURING THE FIELD SURVEY BUT WERE OBSERVED DURING A FIELD CHECK TO SCOPE THE PROJECT. AERIAL PHOTOGRAPHS WERE USED TO PLACE STORM DRAIN FEATURE AND SHOULD BE VERIFIED IN THE FIELD.
6. THIS DOCUMENT AND THE INFORMATION CONTAINED HEREIN ARE THE PROPERTY OF 1031SURVEY, INC. UNAUTHORIZED USE, COPYING, DISCLOSURE OR PUBLICATION BY ANY METHOD IS PROHIBITED WITHOUT THE WRITTEN APPROVAL OF 1031SURVEY, INC. 1031SURVEY, INC. ASSUMES NO RESPONSIBILITY FOR ANY UNAUTHORIZED DUPLICATION OF INFORMATION THAT MAY APPEAR ON ANOTHER PLAN OR MAP.
7. THIS MAP IS PROVIDED IN AN ELECTRONIC FORMAT (ON COMPUTER DISK) AS A COURTESY TO THE CLIENT. THE DELIVERY OF THE ELECTRONIC FILE DOES NOT CONSTITUTE THE DELIVERY OF OUR PROFESSIONAL WORK PRODUCT. THE SIGNED PRINT DELIVERED WITH THIS ELECTRONIC FILE CONSTITUTES OUR PROFESSIONAL WORK PRODUCT, AND IN THE EVENT THE ELECTRONIC FILE IS ALTERED, THE PRINT MUST BE REFERRED TO FOR THE ORIGINAL AND CORRECT SURVEY INFORMATION. WE SHALL NOT BE RESPONSIBLE FOR ANY MODIFICATIONS MADE TO THE ELECTRONIC FILE, OR FOR ANY PRODUCTS DERIVED FROM THE ELECTRONIC FILE WHICH ARE NOT REVIEWED, SIGNED AND SEALED BY US.



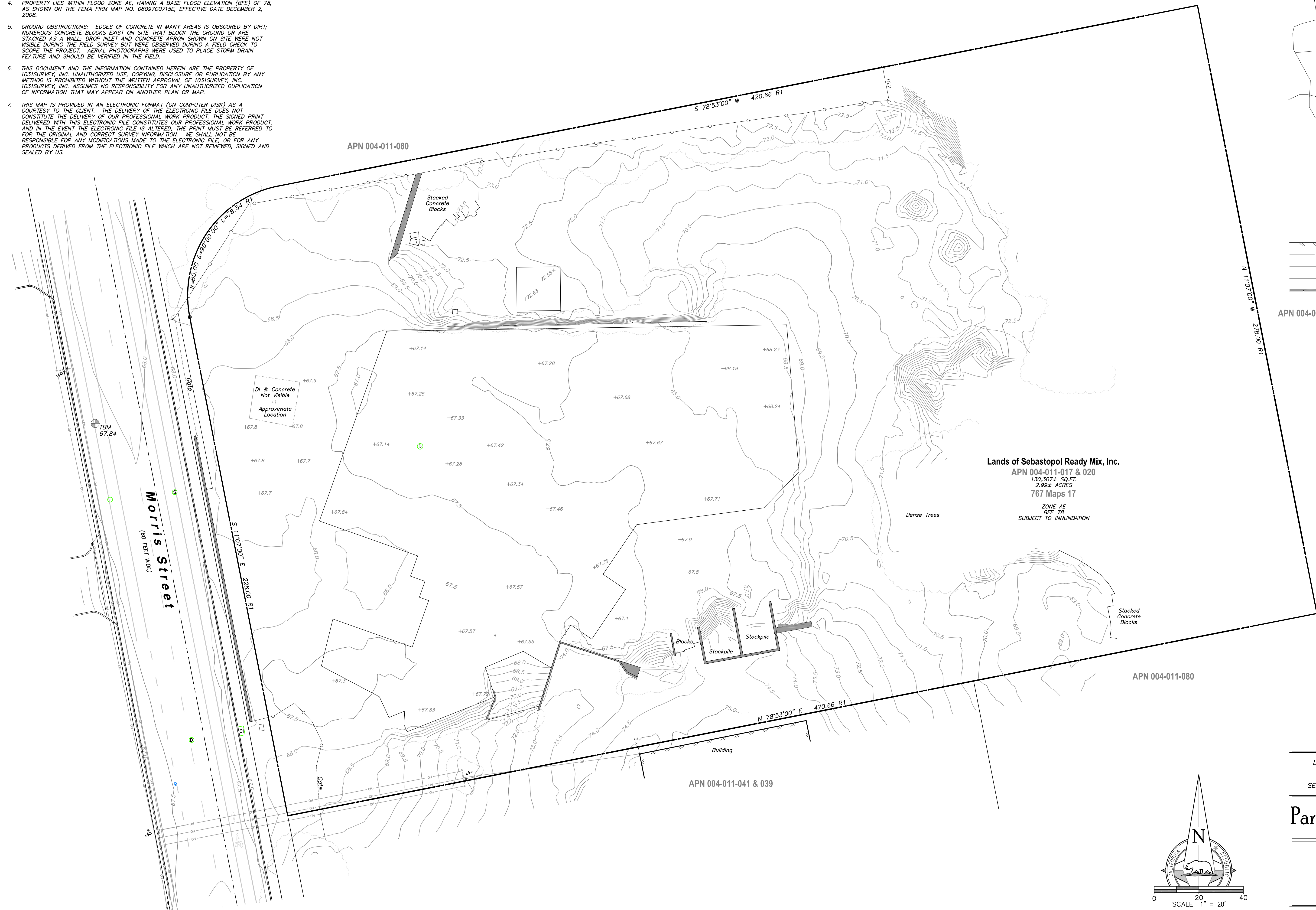
VICINITY MAP  
NTS

**LEGEND**

- BUILDING
- CENTER LINE (PER MAP)
- FENCE, CHAIN LINK
- OVERHEAD UTILITIES
- RETAINING WALL, CONC
- CONCRETE
- JOINT UTILITY POLE
- GUY ANCHOR
- SANITARY SEWER MANHOLE
- STORM DRAIN MANHOLE
- TEMPORARY BENCHMARK
- TREE/BUSH DRIP LINE
- WATER VALVE

**ABBREVIATIONS**

- APN ASSESSORS PARCEL NUMBER
- CI CURB INLET
- CONC CONCRETE
- D STORM DRAIN
- DI DROP INLET
- JP JOINT POLE
- OH OVERHEAD UTILITY LINES
- NTS NOT TO SCALE
- SCR SONOMA COUNTY RECORDS
- S SANITARY SEWER
- TBM TEMPORARY BENCHMARK
- R1 RECORD OF SURVEY, 767 MAPS 17, SCR



Lands of Sebastopol Ready Mix, Inc.  
 APN 004-011-017 & 020  
 130,307± SQ.FT.  
 2.99± ACRES  
 767 Maps 17  
 ZONE AE  
 BFE 78  
 SUBJECT TO INUNDATION



LANDS OF SEBASTOPOL READY MIX, INC.  
 385 MORRIS STREET  
 APN 004-011-017 & 020  
 SEBASTOPOL, SONOMA COUNTY, CALIFORNIA

Partial Topographic Map

**1031Survey, Inc.**  
 HIGH DEFINITION SURVEYING  
 1857 Rainier Circle, Petaluma, California 94954  
 415-827-6370 www.1031survey.com

DATE: 2021.09.21 SURVEY DATE: AUG2021  
 SCALE: 1" = 20' SHEET: 1 OF 1  
 FILE: 21333Topo

