

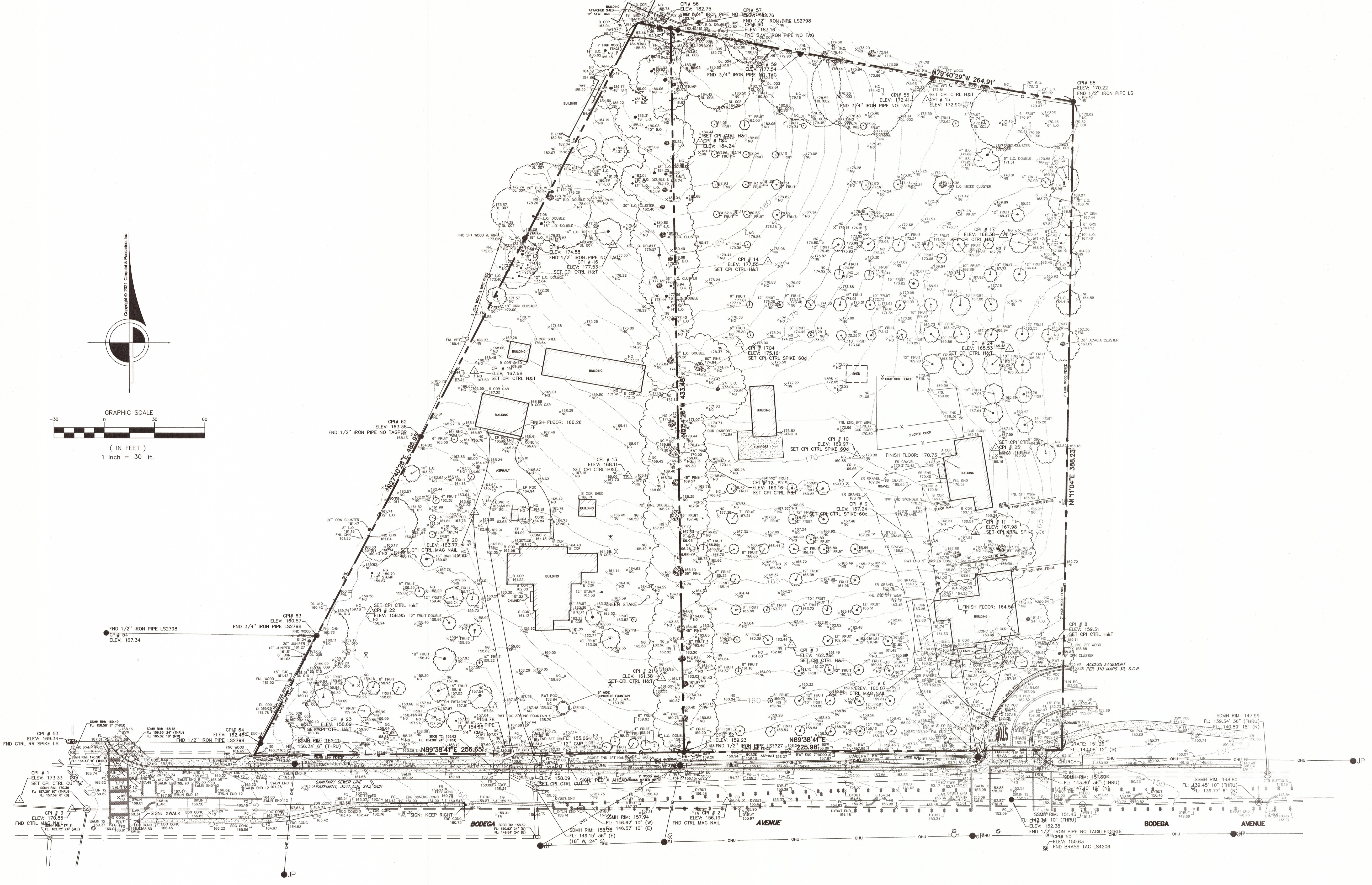
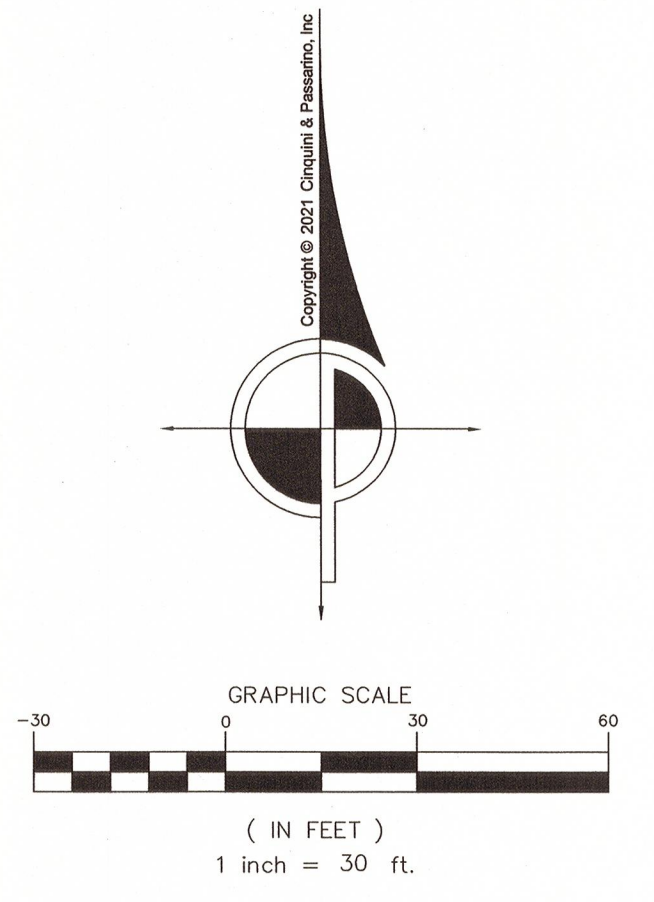
BOUNDARY NOTE
BOUNDARY INFORMATION SHOWN IS BASED ON A BOUNDARY RESOLUTION. A RECORD OF SURVEY WILL BE FILED AS A PART OF THIS PROJECT.

BENCHMARK
THE ORTHOMETRIC ELEVATIONS SHOWN HEREON ARE BASED ON THE NORTH AMERICAN VERTICAL DATUM OF 1988 (NAVD 1988) AND WERE DETERMINED BY STATIC GPS TIES TO CGPS STATION CASR (PID D07031) WITH PUBLISHED ELLIPSOIDAL HEIGHT OF 31.459m, IN ADDITION TO APPLYING THE NGS GEOID HEIGHT MODEL "GEOID2012B".

BASIS OF BEARINGS
THE BASIS OF BEARINGS FOR THIS SURVEY IS THE CALIFORNIA COORDINATE SYSTEM, ZONE 2, NAD 83, EPOCH 2011.00 AS DETERMINED LOCALLY BY A LINE BETWEEN CONTINUOUS GLOBAL POSITIONING SYSTEMS (CGPS) STATION CASR AND STATION HOPB; BEING NORTH H 24°16'15" WEST AS DERIVED FROM GEODETIC VALUES PUBLISHED BY THE CALIFORNIA SPATIAL REFERENCE CENTER (CSRC).

SURVEYOR'S STATEMENT
THIS MAP REPRESENTS A FIELD SURVEY MADE BY ME OR UNDER MY DIRECTION ON JULY 15, 2019 AND REPRESENTS THE VISUAL SURFACE CONDITIONS AS OF AFORESAID DATE.

Professional Land Surveyor
ANTHONY G. CINQUINI
STATE OF CALIFORNIA
NO. 8614
Date: 4/12/2021
Anthony G. Cinquini, P.L.S. 8614



LEGEND (ALL SYMBOLS MAY NOT APPLY)

--- SUBJECT PROPERTY BOUNDARY	--- WIRE FENCE	⊕ IRRIGATION CONTROL VALVE	⊕ JOINT POLE W/STREET LIGHT	⊕ TELEPHONE VAULT	B.O. BLACK OAK	BLDG BUILDING	FL FLOWLINE	RWB RETAINING WALL BOTTOM
--- OVERHEAD ELECTRIC LINE	--- CONCRETE	⊕ MONITORING WELL	⊕ TRAFFIC SIGNAL POLE W/STREET LIGHT	⊕ GAS VALVE	EUC EUCALYPTUS	BSW BACK OF SIDEWALK	FG FINISH GRADE	RWT RETAINING WALL TOP
--- OVERHEAD TELEPHONE LINE	--- PERIMETER OF BUILDING	⊕ WELL	⊕ TELEPHONE POLE	⊕ GAS METER	L.A. LIQUID AMBER	CMP CORRUGATED METAL PIPE	GB GRADE BREAK	SD STORM DRAIN
--- OVERHEAD UTILITY LINES (MULTIPLE)	--- SURVEY CONTROL POINT	⊕ FIRE HYDRANT	⊕ STREET LIGHT	⊕ BOLLARD	L.O. LIVE OAK	DN DRAINAGE INLET	HC HANDICAPPED PARKING SPACE	SLB STREET LIGHT BOX
--- OVERHEAD ELECTRIC (HIGH VOLTAGE)	--- SPOT ELEVATION	⊕ WATER VALVE	⊕ LANDSCAPE LIGHT	⊕ SIGN	MAD MADRONE	DN DOCUMENT NUMBER	HDPE HIGH DENSITY POLYETHYLENE	SWBT SINGLE WHITE BUTTON
--- OVERHEAD UTILITY LINES (HIGH VOLTAGE)	--- SANITARY SEWER CLEANOUT	⊕ WATER METER	⊕ STREET LIGHT BOX	⊕ MAILBOX	ORN ORNAMENTAL	DW DRIVEWAY	NGPE NATURAL GROUND	SYBUT SINGLE YELLOW BUTTON
--- GAS LINE	--- SANITARY SEWER MANHOLE	⊕ HOSE BIB	⊕ TRAFFIC SIGNAL LIGHT BOX	⊕ FOUND IRON PIPE, SIZE AND TAGGED AS NOTED	RWD REDWOOD	DYBUT DOUBLE YELLOW BUTTON	JB JUNCTION BOX	TB TOP OF BANK
--- STORM DRAIN LINE	--- STORM DRAIN MANHOLE	⊕ ELECTRIC BOX	⊕ TRAFFIC DETECTOR LID	⊕ FOUND MONUMENT, SIZED AND STAMPED, AS NOTED	W.O. WHITE OAK	EP EDGE PAVING	LP LIP OF GUTTER	TOE TOE OF BANK
--- SANITARY SEWER LINE	--- STORM DRAIN CATCH BASIN	⊕ PG&E VAULT	⊕ TELEPHONE BOX	⊕ TREE SYMBOL AND DRIP LINE	SYC SYCAMORE	ER EDGE OF ROAD	NG NATURAL GROUND	TC TOE OF CURB
--- WATER LINE	--- DRAINAGE INLET	⊕ ELECTRIC LID	⊕ TELEPHONE MANHOLE	⊕ BIRCH	WIL WILLOW	ETW EDGE TRAVELED WAY	OR OFFICIAL RECORDS	BRC BACK OF ROLLED CURB
--- UGTS UNDERGROUND TRAFFIC SIGNAL WIRE	--- DRAINAGE INLET	⊕ POWER POLE	⊕ CABLE TV BOX		AC ASPHALT	EXST EXISTING	PL PROPERTY LINE	TSB TRAFFIC SIGNAL BOX
--- CHAINLINK FENCE	--- DRAINAGE DOWNSPOUT	⊕ JOINT UTILITY POLE			B.F.P.C.V. BACK FLOW PREVENTION CHECK VALVE		PCP REINFORCED CONCRETE PIPE	TW TOP OF WALL
--- WOOD FENCE								OH OVERHEAD

Job Name: WOODMARK APARTMENTS
7760 & 7716 BODEGA AVENUE
SEBASTOPOL, CA

Description: TOPOGRAPHIC MAP

Scale: 1" = 30'

Sheet: 1 OF 1

DWG. FILE: Y:\8614\Cad\8614TOP_R20210121.dwg

DATE: Apr 12, 2021

TIME: 4:17pm

Drawn By: JM

Checked By: AGC

CINQUINI & PASSARINO, INC.
LAND SURVEYING
1360 N. Dutton Ave. #150 Phone: (707) 542-6268
Santa Rosa, CA. 95401 Fax: (707) 542-2106
WWW.CINQUINIPASSARINO.COM